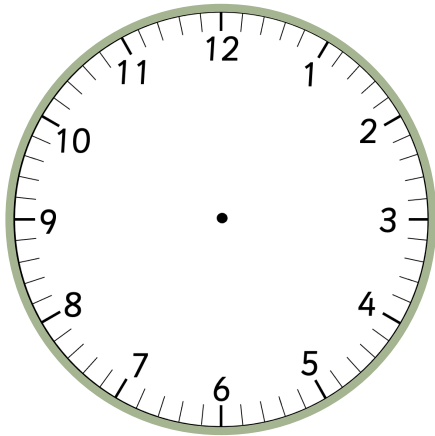
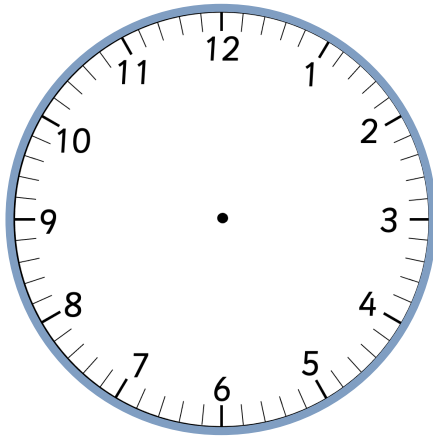


Quarter to and Quarter Past

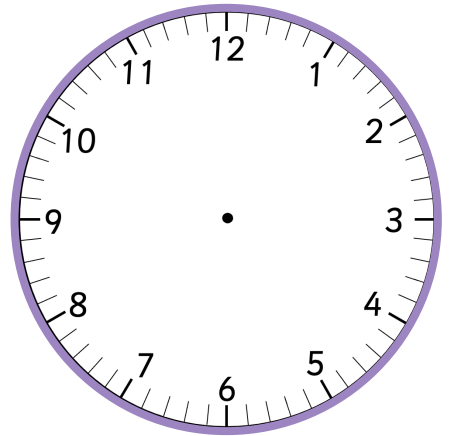
Draw the hands on the analogue clocks to match the digital clocks.



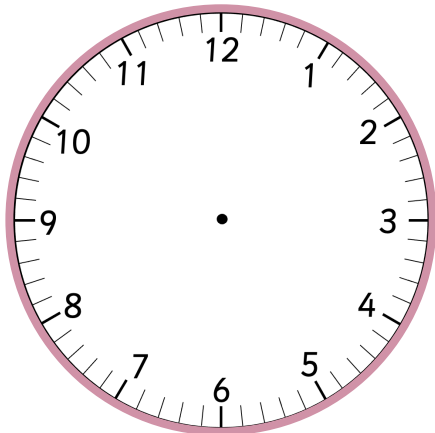
6:15



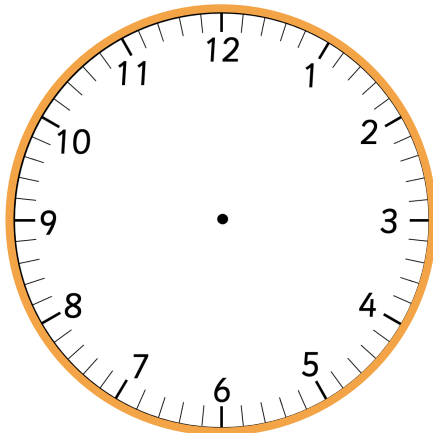
7:15



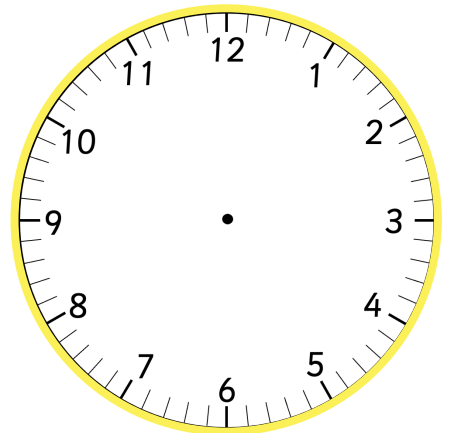
10:45



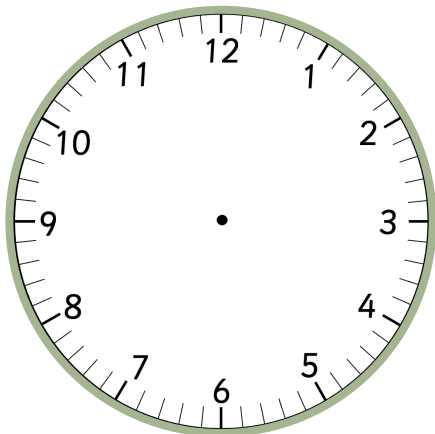
3:45



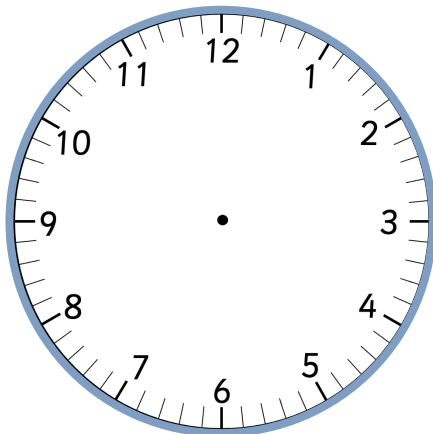
8:15



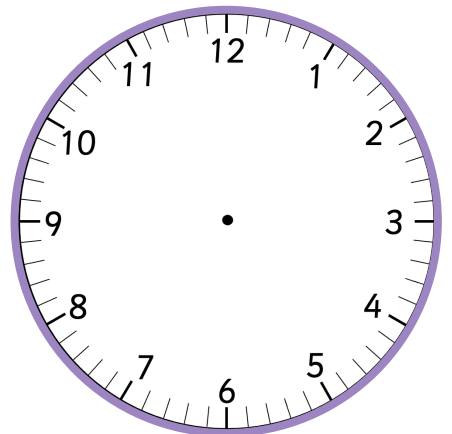
1:45



11:15



2:15

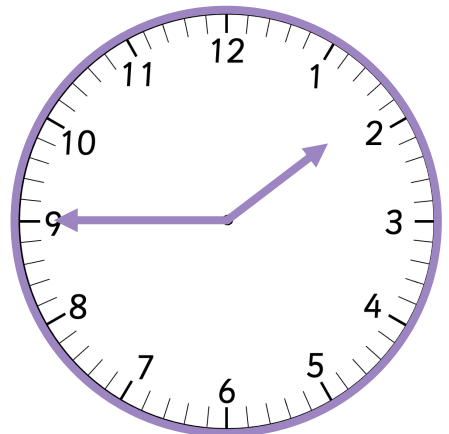
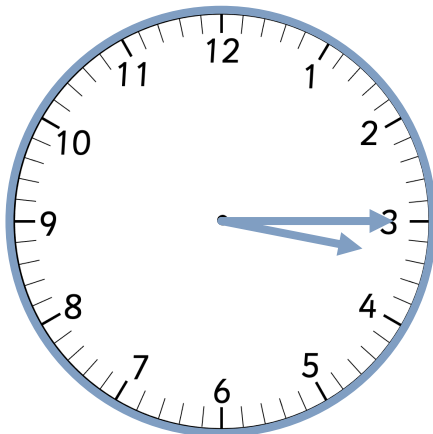
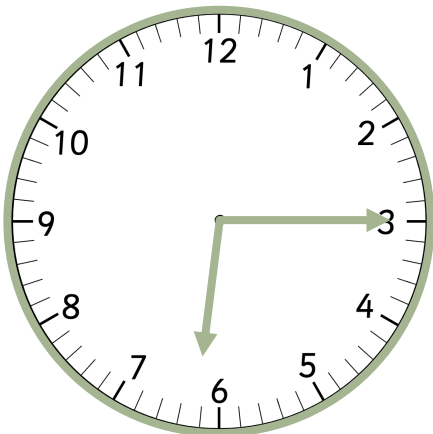
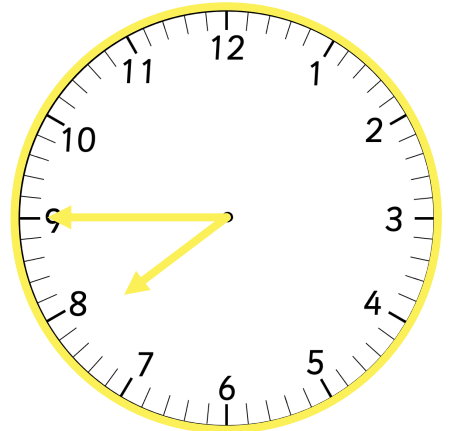
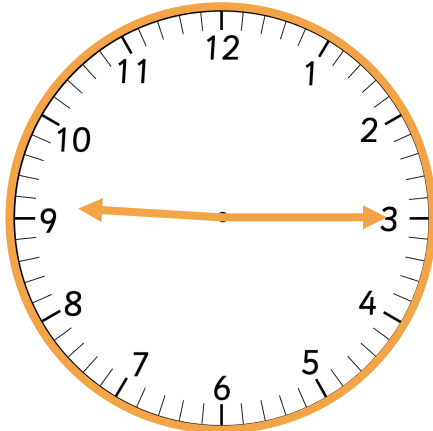
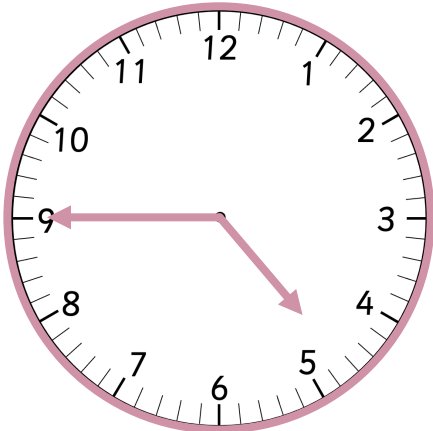
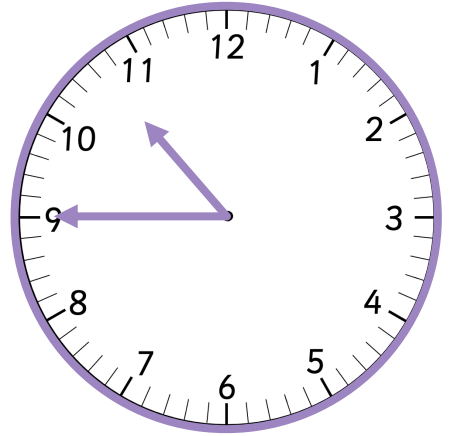
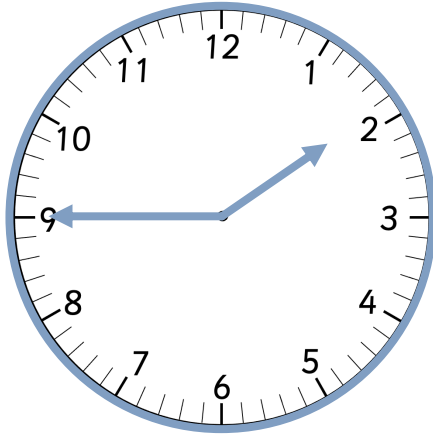
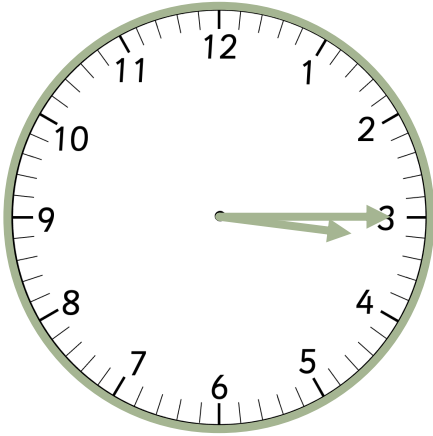


5:45



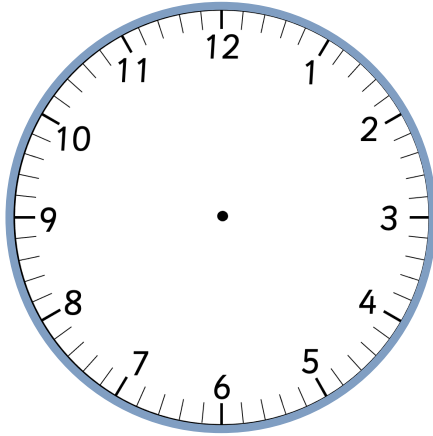
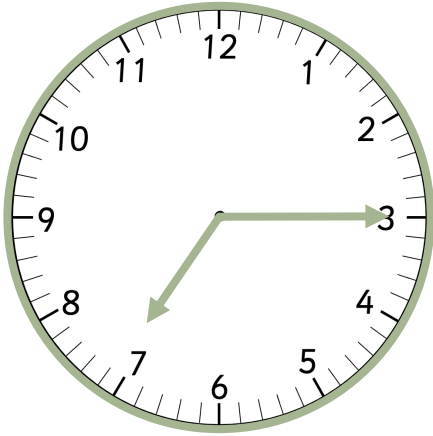
Quarter to and Quarter Past

Fill in the digital clocks to match the hands on the analogue clocks.

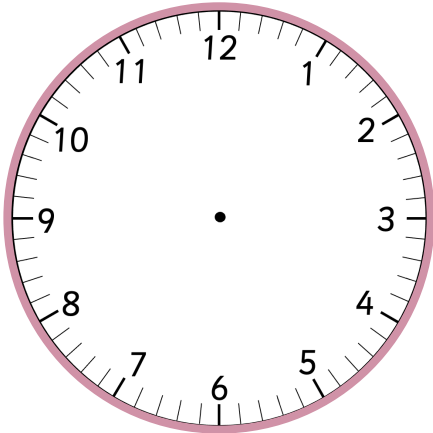
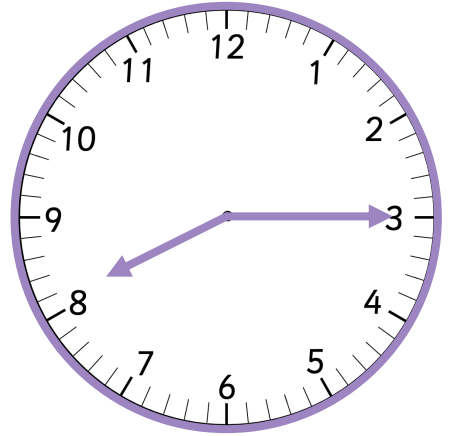


Quarter to and Quarter Past

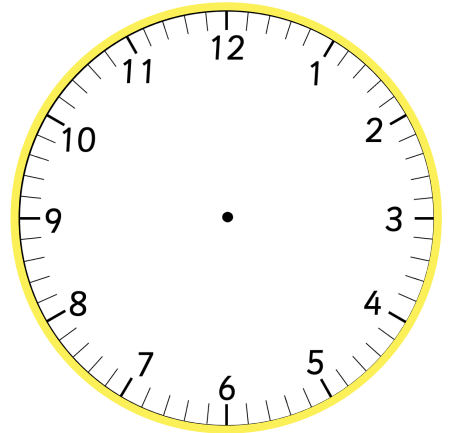
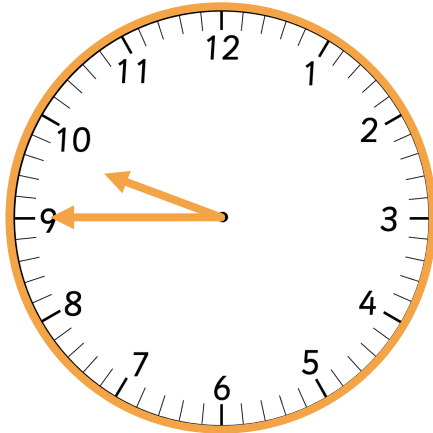
Fill in the missing parts of the clock to match the given times.



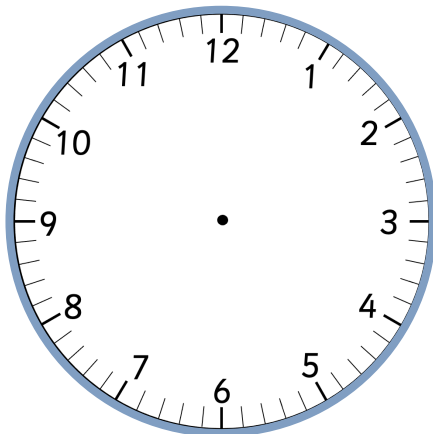
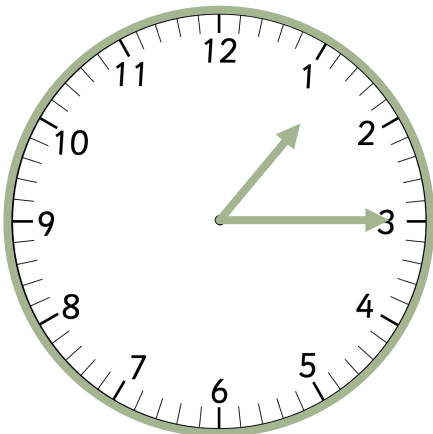
12:45



4:45



2:15



9:45

